

**Nu-Wall® Aluminium****RESIDENTIAL SECTIONAL GARAGE DOOR**

Ashton Ripple 150 Sectional Door

DESCRIPTION

Nu-Wall® is an exterior wall cladding product comprised of a system of extruded aluminium profiles. There are 12 attractive profiles that are pre-finished in a wide range of colours removing the necessity for painting and minimising the requirement for ongoing maintenance.

The use of high-durability powder-coats or thick-film anodising ensures that the cladding of these sectional doors will remain attractive and durable for many years, even in coastal situations.

The Nu-Wall® cladding is attached to a 25x25mm galvanised box section welded steel frame.

A sectional garage door is produced by hinging a number of rigid panels together. These panels move vertically in the opening, then horizontally along the ceiling guided by tracks and counterbalanced with springs.

Ashton Garage Doors recommends that all sectional doors be installed with a proven reliable automatic garage door opener. See your local authorised reseller.

SIZE RANGE

Louvre, Mono and Aero profile doors are available in sizes from 1960mm to 2450mm in height and from 2400mm to 5950mm in width.

Ripple Board profile doors are available in sizes from 1950mm to 2800mm in height and from 2400mm to 5950mm in width.

The number of panels required is dependant on the height of the door and, the width of the boards if used horizontally.

Additional sizes may be available on request.

FEATURES

- ✓ “Overlap” panel profile.
- ✓ Custom sizes – doors are made to order.
- ✓ Panel heights are adjusted to suit the profile used, effectively hiding panel joints to create the perfect look.
- ✓ Welded 25x25mm galvanised box-section frame for the utmost strength.
- ✓ Various Nu-Wall® profiles available to suit any style.
- ✓ Nu-Wall® cladding has excellent corrosion resistant properties.
- ✓ Heavy duty galvanised hinges.
- ✓ Wheels have ball-bearings for smoother, more durable operation.
- ✓ Springs designed to comply with requirements of Aust./NZ Standard i.e. 20,000 cycles.
- ✓ Reinforcing for wide doors.
- ✓ Bottom weather-seal helps prevent leaves and dirt from entering the garage even on slightly uneven floors.
- ✓ All Ashton Architectural Garage Doors are hand-made to exacting standards to ensure each door is of premium quality.

COLOURS/FINISHES

Nu-Wall® cladding can be powder-coated in a vast array of colours to suit any colour scheme. Anodising is also available on request.



Typical construction method.



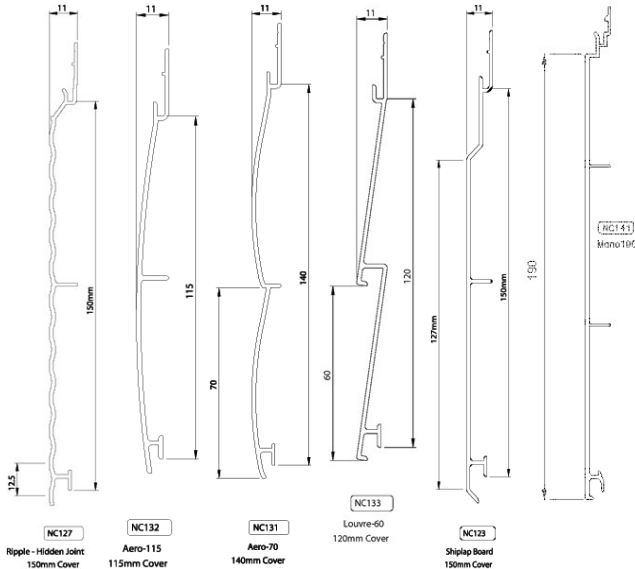
Nu-Wall[®] Aluminium

RESIDENTIAL SECTIONAL GARAGE DOOR

OPTIONS

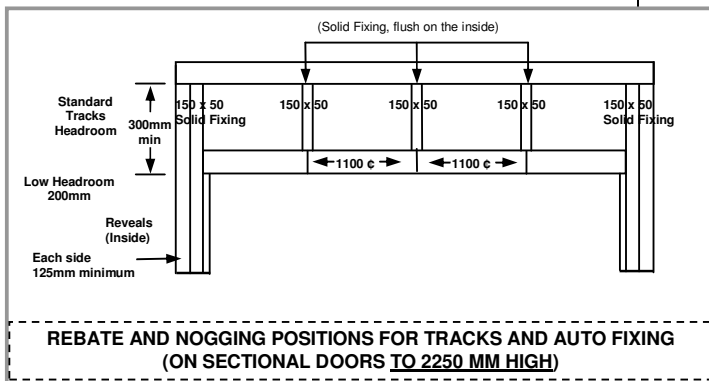
Nu-Wall[®] products can be used to produce a door style to complement any home's architecture.

Below is a selection of the more popular Nu-Wall[®] profiles available.



Visit the Nu-Wall[®] website on www.nuwall.co.nz to find out more about this aluminium cladding.

INSTALLATION REQUIREMENTS



Note: the above specifications can be critical to the proper operation and installation of the door and opener. If unsure, please contact the manufacturer.

CARE & MAINTENANCE

A metal Ashton garage door should be cared for like a car. The more you wash and service it, the longer it will last. The corrosion resistance of your Ashton garage door will be greatly enhanced by cleaning its surface monthly with car wash and a soft bristle brush, paying particular attention to the areas that seldom receive the benefits of rain water.

As the garage door is the largest moving object in a home, Ashton Garage Doors recommends a yearly service by a trained professional. This will ensure that the door and opener will continue to operate with the correct spring tension and safety settings. All moving parts should be checked for excessive wear and tear, and well lubricated with a silicon-based product. All screws/bolts should be regularly checked for tightness.

A monthly test of the garage door opener's safety settings should be carried out in accordance with the opener's owner's manual recommendations.

Notes / Information

- Ashton Architectural Garage Doors, in normal residential use are covered by a 1 year warranty for all components and labour conditional on care and servicing as recommended in this specification sheet and by the reseller. Full details of the warranty are available, on request, from your nearest Ashton reseller.
- The company reserves the right to make changes or improvements to the products or accessories without notice and without incurring any obligation to make similar changes or improvements to goods previously ordered.
- Details are correct at date of publication. Specifications subject to change without notice. If a specification is critical to the end use, please contact the manufacturer first.
- Nu-Wall[®] is a registered trademark of Design Aluminium Ltd.

